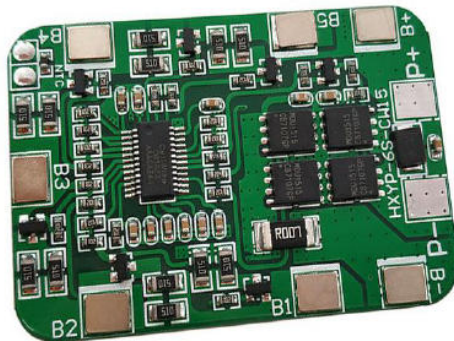


Model: BMS - A601 (Li-ion 6S-15A)

Test item (Test at normal temperature 25±2℃)		Criterion
Voltage	Charging voltage	DC: 25.2V CC/CV (4.2v/Cell) 1S
Supply Current	Normal operating mode current: Fuel gauge in NORMAL mode. ILOAD > Sleep Current	≤30uA
	Maximal continuous charging current	15A
	Maximal continuous discharging current	15A
	Balance current for single cell	56±3mA
Over-charge Protection (single cell)	Balance voltage for single cell	4.2V±0.025V
	Over charge detection voltage	4.25±0.050V
	Over charge detection delay time	1S ≤
	Over charge release voltage	4.15±0.05V
Over discharge protection (single cell)	Over discharge detection voltage	2.7±0.05V
	Over discharge detection delay time	1S ≤
	Over discharge release voltage	3±0.05V
Current protection (Battery pack)	ChargeOver current detection current	20±2A
	Detection delay time	100-400mS
	Discharge Over current detection current	20±2A
	Detection delay time	100-400mS
	Release condition	Cut load/Remove charge
Discharge Short protection	Detection condition	Exterior short circuit
	Detection delay time	100us
	Release condition	Cut load
Resistance	Main loop electrify resistance	≤20mΩ
Temperature	Operating Temperature Range	-20~+60℃
	Storage Temperature Range	-40~+125℃

SIZE: L54 *W34*T3 mm

NTC: Temperature switch: / Weak current switch: / Activation Method: /



54*34*3.0MM